

## ACCELERATE

The US Government, through the global PEPFAR initiative, has supported substantial advances in India's response to the HIV/AIDS epidemic. ACCELERATE identifies and engages vulnerable populations, including key populations, and provides preventive and treatment services across the HIV care continuum.

# ACCELERATE

HIV/AIDS

JOHNS HOPKINS UNIVERSITY

April 2019 - April 2024

## SECONDARY THEMES

HEALTH SYSTEM STRENGTHENING

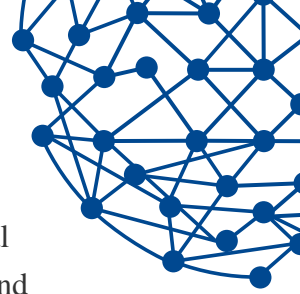
## COMMUNITIES SERVED

LGBTIQ | Orphan and Vulnerable Children |  
MSM | FSW | PLHIV | PWID

## PROJECT LEAD

Dr. Sunil Suhas Solomon

## GOAL



## ACCELERATE

The US Government, through the global PEPFAR initiative, has supported substantial advances in India's response to the HIV/AIDS epidemic. ACCELERATE identifies and engages vulnerable populations, including key populations, and provides preventive and treatment services across the HIV care continuum.

The overarching goal of ACCELERATE is to design, implement and evaluate sustainable novel models of HIV testing and care that supports the Government of India's National Strategic Plan (NSP) for HIV/AIDS and STI 2017-24 aimed at improving access to HIV prevention and treatment services, and social protection schemes among vulnerable populations including Key Populations (KP) and their families in India.

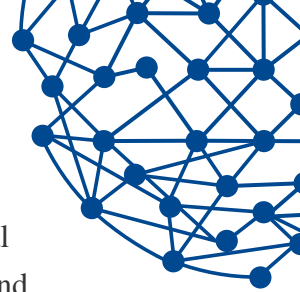
### OBJECTIVES

1. To increase access and availability of KP-friendly prevention services
2. To improve access and uptake of HIV testing services among vulnerable Indian populations
3. To facilitate increased access, adherence, and retention to antiretroviral therapy and improve survival among PLHIV
4. To improve the well-being of orphans and vulnerable children mitigating the impact of HIV/AIDS

### SUMMARY

Project ACCELERATE assists the Government of India's National AIDS Control Program in achieving HIV epidemic control, through direct implementation of service delivery models in President's Emergency Plan for AIDS Relief (PEPFAR) geographies. ACCELERATE rapidly demonstrates and rigorously assesses models that deliver high impact HIV and social services for key populations - female sex workers, men who have sex with men, transgender persons, and people who inject drugs - and their partners, spouses, and children with the goal of improving health outcomes and controlling the HIV epidemic. The project also provides TA at the national, state, and district levels across the HIV care continuum from HIV prevention to viral suppression, along with further expansion of HIV and related services in the field.

### WORK DONE AROUND COVID-19



## ACCELERATE

The US Government, through the global PEPFAR initiative, has supported substantial advances in India's response to the HIV/AIDS epidemic. ACCELERATE identifies and engages vulnerable populations, including key populations, and provides preventive and treatment services across the HIV care continuum.

Provision of PPE, correct and updated information about COVID-19 prevention and care, communication strategies, and ensuring continuity of HIV services during COVID-19 lockdown.

## GEOGRAPHIES



Maharashtra

Mumbai | Pune | Thane



Andhra Pradesh

Anantapur | Chittoor | East Godavari | Guntur | Krishna |  
Kurnool | Prakasam | Srikakulam | Visakhapatnam |  
Vizianagaram | West Godavari | YSR | Sri Potti Sriramulu  
Nellore



Manipur

Chandel | Churachandpur | Imphal East | Imphal West



Mizoram

Aizawl | Champhai | Kolasib | Lunglei | Mamit



Nagaland

Dimapur | Mokokchung | Tuensang



Telangana

Hyderabad | Karimnagar | Mahbubnagar | Nalgonda |  
Rangareddy